



RENEW

INVESTMENT SUMMIT

27-29 November 2022

Crowne Plaza RDC Hotel & Convention
Riyadh, Saudi Arabia

REAL ESTATE FOR A NEW WORLD

Online & In-person

www.therenuevent.com

WHY RENEW?

OPERATION AND CONSTRUCTION OF BUILDINGS ACCOUNTED FOR **38%** OF GLOBAL ENERGY-RELATED CO₂ EMISSIONS IN 2020.

WHILE INITIATIVES TO REDUCE REAL ESTATE CARBON EMISSIONS ARE INCREASING, THE RATE OF ANNUAL IMPROVEMENT IS DECREASING.



SUSTAINABLE REAL ESTATE IS NOT
A NEW IDEA.

BUT CLIMATE CHANGE RISKS ARE
STEERING INVESTORS TOWARDS
SAFER, HIGHER-PERFORMING
GREEN ASSETS.

GREEN BUILDINGS ARE AMONG THE
BIGGEST INVESTMENT
OPPORTUNITIES AT
\$24.7 TRILLION IN EMERGING
MARKETS ALONE.





RENEW

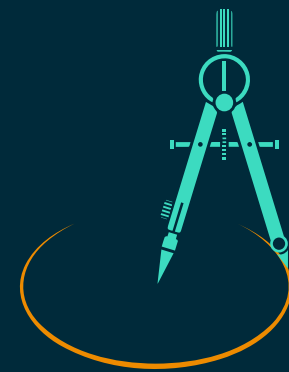
WILL REDEFINE THE FUTURE OF
REAL ESTATE INVESTMENT WITH
SUSTAINABLE IDEAS AND
INNOVATIONS SHOWCASED BY
ORGANISATIONS AND THOUGHT
LEADERS, CREATING A NEW WORLD
WITH THE PRESERVATION OF THE
ENVIRONMENT AND NATURE AT
ITS CORE.

SUMMIT

TOPIC THEMES



Climate action



Design



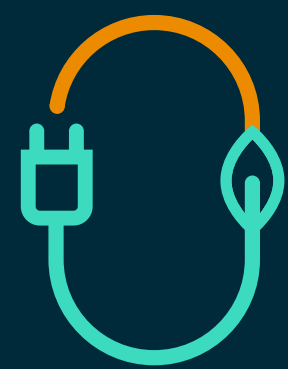
Technology



Human capital



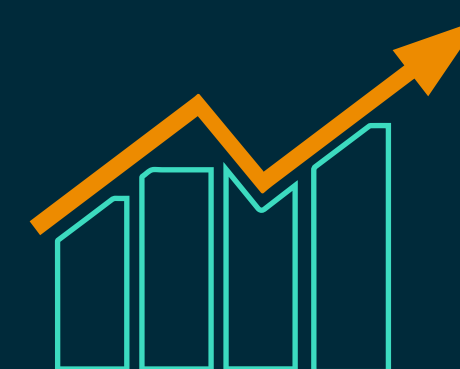
Government
policies



Net-zero



Construction



Investment &
financing

WHO WILL BE THERE?

As a hybrid gathering being held over three days on 27-29 November 2022, hundreds of the most influential real estate investment decision makers will be joining us in person for an immersive experience. Many more from around the globe will be joining in virtually online from the comfort of their home or office.

PARTICIPATING ORGANISATIONS WILL INCLUDE:

- INSTITUTIONAL INVESTORS
- REITs
- REAL ESTATE ASSET OWNERS
- ASSET/ FUND MANAGERS
- PRIVATE AND PUBLIC PENSION FUNDS
- PRIVATE INVESTORS
- GOVERNMENTAL AUTHORITIES
- PROPERTY DEVELOPERS
- CONSTRUCTION COMPANIES
- REAL ESTATE OPERATORS
- TECH COMPANIES
- ENGINEERING COMPANIES
- ARCHITECTS
- CONSULTANTS
- BANKS/LENDERS
- LAWYERS
- RATINGS/ CERTIFICATION COMPANIES
- ACADEMICS

PARTICIPATING JOB TITLES WILL INCLUDE:

- CEOs
- MANAGING DIRECTORS
- COOs
- CFOs
- CIOs
- CDOs
- HEADS OF ESG
- HEADS OF SUSTAINABILITY
- HEADS OF ASSET MANAGEMENT
- HEADS OF DEVELOPMENT
- HEADS OF INVESTMENT
- HEADS OF INNOVATION
- HEADS OF TECHNOLOGY

OUTCOMES CREATING A LASTING IMPACT

1

ENGAGING THE WORLD'S
MOST INFLUENTIAL
REAL ESTATE INVESTORS

5

CREDIBLY PROMOTING
SUSTAINABILITY TO
THE WORLD

2

CREATING NEW
ENDORSEMENTS BY A
STELLAR SPEAKER LINE-UP

6

BECOMING A PLATFORM
TO SHOWCASE NEW AND
UNSEEN TECHNOLOGY

3

DEMONSTRATING THE
FINANCIAL ADVANTAGES OF
LONG-TERM SUSTAINABLE
DEVELOPMENT

7

FACILITATING DECISION
MAKING AND PROGRESS

4

CHALLENGING THE
AUDIENCE TO EXPLORE
NEW POSSIBILITIES

8

GENERATING
OPPORTUNITIES TO
NETWORK AND BUILD
RELATIONSHIPS

EVENT FEATURES

KEYNOTES & LIVE INTERVIEWS

Inspirational and educational speakers who have already come a long way in accomplishing ESG goals & key stakeholders on how they see the future.

SHOWCASE

Key new technologies that will change the real estate industry will be presented.

WORKSHOPS

With smaller number of participants who will share their experiences and innovative ideas.

EXPERIENCES

Interactive attendee experiences to explore existing technologies and prototype projects that have sustainability in their core.

NETWORKING

High value networking between attendees with goal of sharing concepts and ideas and concluding business deals.

PITCHES

For companies that have developed ways to preserve the environment and at the same are contributing to the real estate industry.

PAST SPEAKERS AT OUR EVENTS



BARRY S. STERNLICHT
Chairman and CEO
Starwood Capital Group



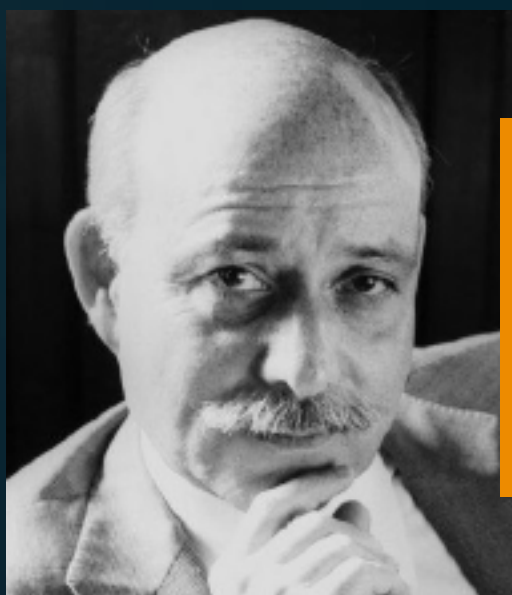
TERRY JONES
Founder
Travelocity.com



SÉBASTIEN BAZIN
Chairman and CEO
Accor



CHRISTOPHER J. NASSETTA
President and CEO
Hilton



JEREMY RIFKIN
Economic and social theorist
writer, public speaker
political advisor, and activist



ZURAB POLOLIKASHVILI
Secretary-General
UNWTO



JOHN DEFTERIOS
Business' Emerging Markets
Editor and Anchor
CNN



WOLFGANG M. NEUMANN
Chairman
Sustainable Hospitality
Alliance



PROF. ALEXANVDER KEKULÉ
Director
Institute for Biosecurity
Research



GLORIA GUEVARA MANZO
Chief Special Advisor
Ministry of Tourism
Kingdom of Saudi Arabia



ALEX DICHTER
Senior Partner
McKinsey & Company



DUNCAN OWEN
Global Head of Real Estate
Schroder Real Estate
Investment Management



MATTHEW FLETCHER
Director of European
Investor Outreach, EPRA



DR. PAUL MARSHALL
Chief Environment Officer
NEOM



WILLIAM MCDONOUGH
Founding Partner
William McDonough
and Partners,
Architects



LAURA BRINKMANN
Vice President, Real Estate
Brookfield



DR. KATE WALSH
Dean & E.M. Statler Professor
School of HA,
Cornell University



COLEY BRENAN
Partner, Head of Europe
KSL Capital Partners



GEOFFREY JW KENT
Founder & Co-Chairman
Abercrombie & Kent

GET IN TOUCH WITH US

PROGRAMME AND EVENT ENQUIRY:

MARINA FRANOLIC

T: +385 91 761 0885

E: marina.franolic@thebench.com

SALES ENQUIRY:

MATTHEW WEIHS

M: +44 7858 511 012

E: matthew.weihs@thebench.com

JANA BADER

M: +966 50 678 8666

E: jana.bader@thebench.com

